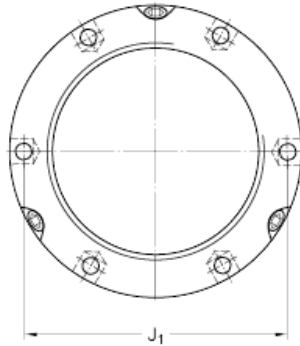
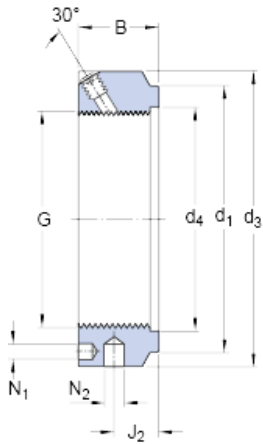




NTN bearing de Mexico, S.A.



skf KMTA 36 Precision lock nuts with axial locking screws, Precision lock nuts

Bearing No. KMTA 36

KMTA 36 Bearing 2D drawings and 3D CAD models

G	M 180x3
d ₁	215 mm
B	32 mm
d ₃	230 mm
d ₄	182 mm
J ₁	210 mm
J ₂	17 mm
N ₁	8.4 mm
N ₂	10 mm
Axial static load carrying capacity	1220 kN
Mass	3.9 kg
Associated spanner (Hook spanner in accordance with DIN 1810)	B 230-245
Grub (set) / Locking screw size	M 10
Recommended tightening torque	35 N · m