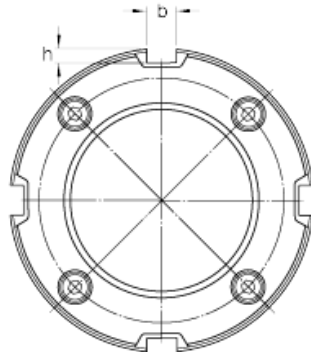
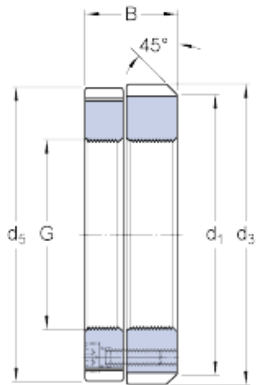




NTN bearing de Mexico, S.A.



skf KMD 20 Precision lock nuts with axial locking screws, Precision lock nuts

Bearing No. KMD 20

G	M 100x2
d ₁	125 mm
B	32 mm
d ₃	130 mm
d ₅	129 mm
b	10 mm
h	4 mm
Mass	1.3 kg
Associated spanner (Hook spanner in accordance with DIN 1810)	HN 18-20
Grub (set) / Locking screw size	M 6
Recommended tightening torque	14.2 N · m

KMD 20 Bearing 2D drawings and 3D CAD models